

## North Star Academy Section 10 Consultation

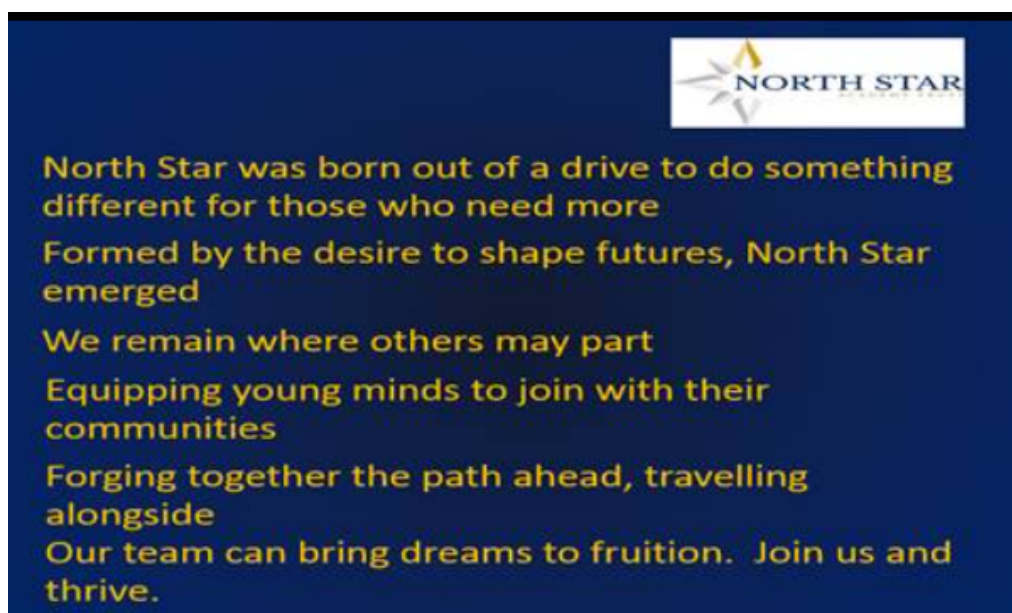
North Star Academy Trust (NSAT) is delighted to launch a Section 10 Consultation in relation to its new Free School, The North Star Academy Alternative Learning Provision (ALP). The North Star Academy ALP is a brand new, state of the art ALP, currently being built in Bristol. When open, it will cater for children and young people from Key Stage 2 to Key Stage 4 (ages 7-16) who have a range of Social, Emotional and Mental Health Difficulties (SEMH). All of our pupils will be provided with an exciting, balanced education which will be appropriately paced and designed to meet their individual educational needs. When it opens in September 2022, the school will have capacity to take 85 pupils.

As part of the process of opening a new school, the Trust is legally required to hold a consultation exercise (under Section 10 of the Academies Act 2010) to determine whether the Trust should enter into a funding agreement with the Secretary of State to set up a free school, namely The North Star Academy ALP. Model funding agreements can be viewed here -

<https://www.gov.uk/government/publications/academy-and-free-school-funding-agreements>

The consultation will allow parents/carers and pupils, staff and governors from other schools, local authorities, councillors, local residents and any other interested parties to learn more about NSAT and the new school and to share their views. This is an exciting time for us all as we embark upon this journey to open a brand-new specialist provision and forge links with our new community. It will provide opportunities to build on the strengths and experiences of the community in collaboration with other schools in the Trust. We are looking forward to hearing your views and working with you to provide a new and inclusive school.

### NSAT Mission Statement



### North Star Academy ALP Vision

We believe that all young people deserve and have the right to an outstanding education. The ALP will provide a superb educational setting for pupils who are finding it difficult to engage in mainstream settings and need additional support. It will offer an opportunity for pupil needs to be better identified and understood and support the process of them transitioning back into mainstream schools well equipped to successfully engage with learning.

There will also be an essential sense of belonging and inclusiveness - of being part of a school that cares about them and has high expectations and ambitions for them. Students will be proud to be members of the North Star community, they will feel safe and re-engage with learning.

There will be close collaboration with both mainstream and special schools to develop practice, ensure curriculums mesh and to support transition and reintegration. There will be a rigorous process of assessment and target setting to monitor and evaluate readiness to return to the commissioning establishment and a gradual process of reintegration when this is appropriate.

The vision is that the ALP will draw on the current strength of partnerships with schools and local authorities and work collaboratively with all stakeholders to help improve outcomes for young people.

### **Site Proposal for North Star Academy ALP**

The site for North Star Academy ALP is the former Sea Mills Primary School site on Hallen Drive in Sea Mills, Bristol BS9 2NT.

The building will be a new build construction and will therefore be designed specifically to meet the needs of the pupils and staff. It will have separate teaching areas for the different phases and additionally contain an array of ancillary teaching and administration rooms plus facilities for separate dining, play, communal occupation and outdoor spaces.

Specialist rooms / areas include:

- Science
- Design Technology
- Food Technology
- Sensory Rooms
- Art
- Construction
- MUGA
- Music
- Sports Hall

Construction began in November 2020 after a long planning process to involving being sympathetic to local environmental and aesthetic factors.

### **Site Plans**

SITE PLAN



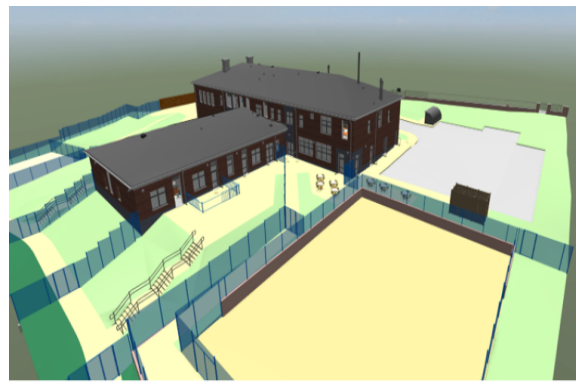
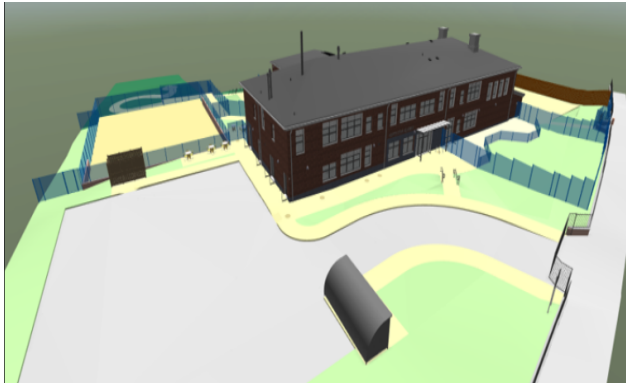
PLAN | Proposed Site Layout



EXTERNAL PERSPECTIVE | View from Car Park



EXTERNAL PERSPECTIVE | View of Primary Classrooms



### Consultation Process

The Consultation will run from **Tuesday 5<sup>th</sup> January – Sunday 13<sup>th</sup> February 2022**

Information can be found on our Trust websites:

<https://northstar-academy.co.uk/>

If you would like to comment on the proposal please complete our consultation questionnaire which can be found at <https://www.surveymonkey.co.uk/r/8MGPBVV> or complete the attached copy.

### Consultation Questionnaire

1. About you: which of the following best describes you?

	Please Tick
Parent/ Carer	
North Star Member of staff or Governor	

North Star Trustee/Member	
Governor of local school/academy	
Pupil at local school/academy	
Local community member	
Councillor or MP	
Local business	
Other: Please specify	
Prefer not to answer	

2. Where do you live, approximately, in relation to the proposed site?

Within 1 mile	
Within 3 miles	
Within 5 miles	
Greater than 5 miles	

3. Do you agree that opening the proposed North Star Academy ALP will provide additional options for parents and meet a need for additional specialist school places in Bristol?

Yes	
No	
Unsure	

4. Do you agree that the vision of North Star Academy ALP will meet the needs of young people?

Yes	
No	
Unsure	

5. Do you support our focus on a differentiated, personalised learning approach for each young person?

Yes	
No	
Unsure	

6. We want the school to be an important part of the local community. Are there any services you would like the school to offer the local community?

Use of sports facilities	
Use of rooms	
Other	

7. Should North Star Academy Trust enter into a Funding Agreement with the Secretary of State for Education in order to open this school?

Yes	
No	
Unsure	

Yes	
No	
Unsure	

8. Do you support the proposal for North Star Academy Trust to open a new ALP in Bristol?

9. Please provide any general comments and feedback:

10. Would you like us to stay in touch and be added to our mailing list to receive further information about the school?

11. If you would like to be added to our mailing list, please confirm your email address:
-

**Please return the completed form by post to:**

**North Star 240°  
Long Cross  
Lawrence Weston  
Bristol BS11 0QA**

**or email to:**

**[NorthStar240@Northstar-academy.co.uk](mailto:NorthStar240@Northstar-academy.co.uk)**